

HORIZONS



Horizons Exhibition Catalogue

Table of Contents

Table of Contents.....	Page 2
Horizons: A Foreword By Luke McTaggart.....	Page 3
Curatorial Statement By Catherine Neil.....	Page 4
Installation Shots.....	Page 5
Overview of Works.....	Page 14
Artist's CV.....	Page 54
Bailiffgate Museum and Gallery Information.....	Page 55

Horizons: A Foreword

By Luke McTaggart

Horizons is composed of a total of 51 paintings created over the course of the past year. Having the opportunity to work towards a solo exhibition in such a large and spacious venue at an early stage in my vocation has been invaluable.

The work that comprises this show is a record of my own engagement with the few square miles of landscape that surround my home in Amble, Northumberland. In painting I am aware of my own deep attachment to it but also of how painting itself shapes the way that we see the world. Painting allows me to engage with my own sense of place, formal relationships between colour and shape evoke sensations of light and space. Each of the paintings a link in a chain that leads me deeper into an

exploration of the world around me, whilst simultaneously creating a plastic world in pictorial form. It is a demanding and mysterious process that is in equal parts exciting and frustrating. As Frank Auerbach states, painting is “quite simply the most marvellous activity human beings have ever invented”.

I would like to extend my thanks to the whole Bailiffgate Team without whom the exhibition would not have been possible. In particular Curator Catherine Neil whom first approached me about having a show and has been an invaluable critical eye along the way. Julie Hall has been a brilliant help behind the scenes with the administrative workload for the show. A special thanks also to Mick and Harry for their technical support during the installation.

Curatorial Statement

By Catherine Neil

For thousands of years, we have sought to understand both our place in nature and our relationship to it.

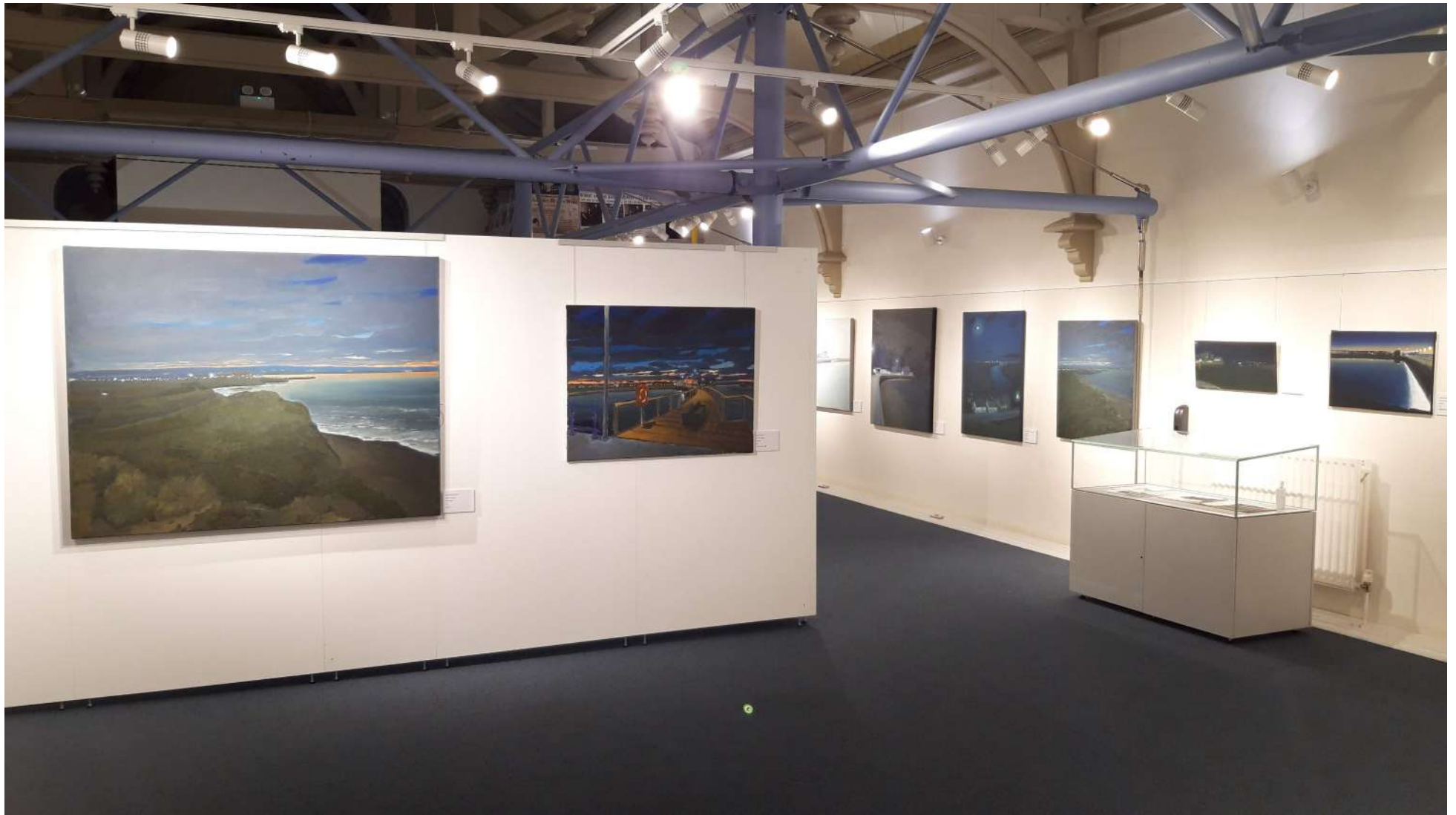
Artists are central to that exploration. They worked to capture the landscape around them, recreate its complex beauty and still the transient moment. To achieve their desire, they long debated whether to immerse themselves in the elements or to retreat to the quiet contemplation of the studio and search for the memory of it. When photography released them from the need to imitate, they began a more personal journey – exploring their place within nature, their particular relationship to it and in so doing, themselves.

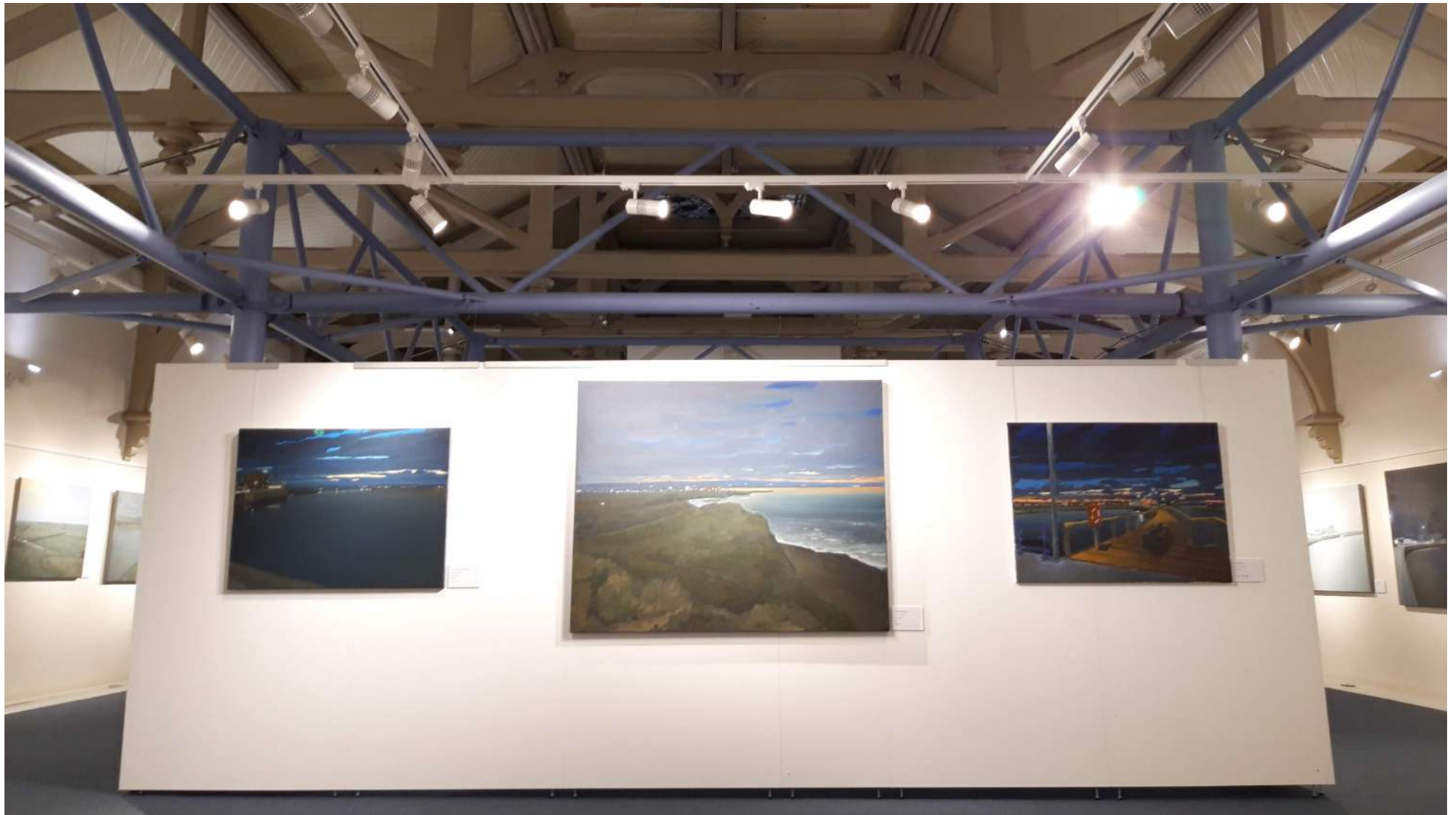
Luke both observes and is embraced by landscape of his birth, he is inextricably bound to it and through exploration he reveals both the landscape around him and himself within it. There is an intimacy between painter and his subject, an emotional depth, an often desolate, elegiac beauty, whether it be the last cry of the landscape or the whisper of the night.

Installation Shots

















Overview of Works

All measurements given are in cm and are rounded to the nearest 5cm.

'Estuary Light'
Acrylic on canvas
2022
60x90cm



£1,050

'Warkworth, Late Afternoon
Haze'
Acrylic on canvas
2022
110x50cm
£1,050



'Yellow Boat In A Fog
Bank'
Acrylic on canvas
2022
60x75cm

£850





'Yellow Boat In A Haze'
Acrylic on canvas
2021
30x40cm

£275



'Harbour In Fog'
Acrylic on canvas
2022
40x50cm

£450

'View Off The Horseshoe
Hill (Amble Harbour)'
Acrylic on canvas
2022
60x75cm

£850

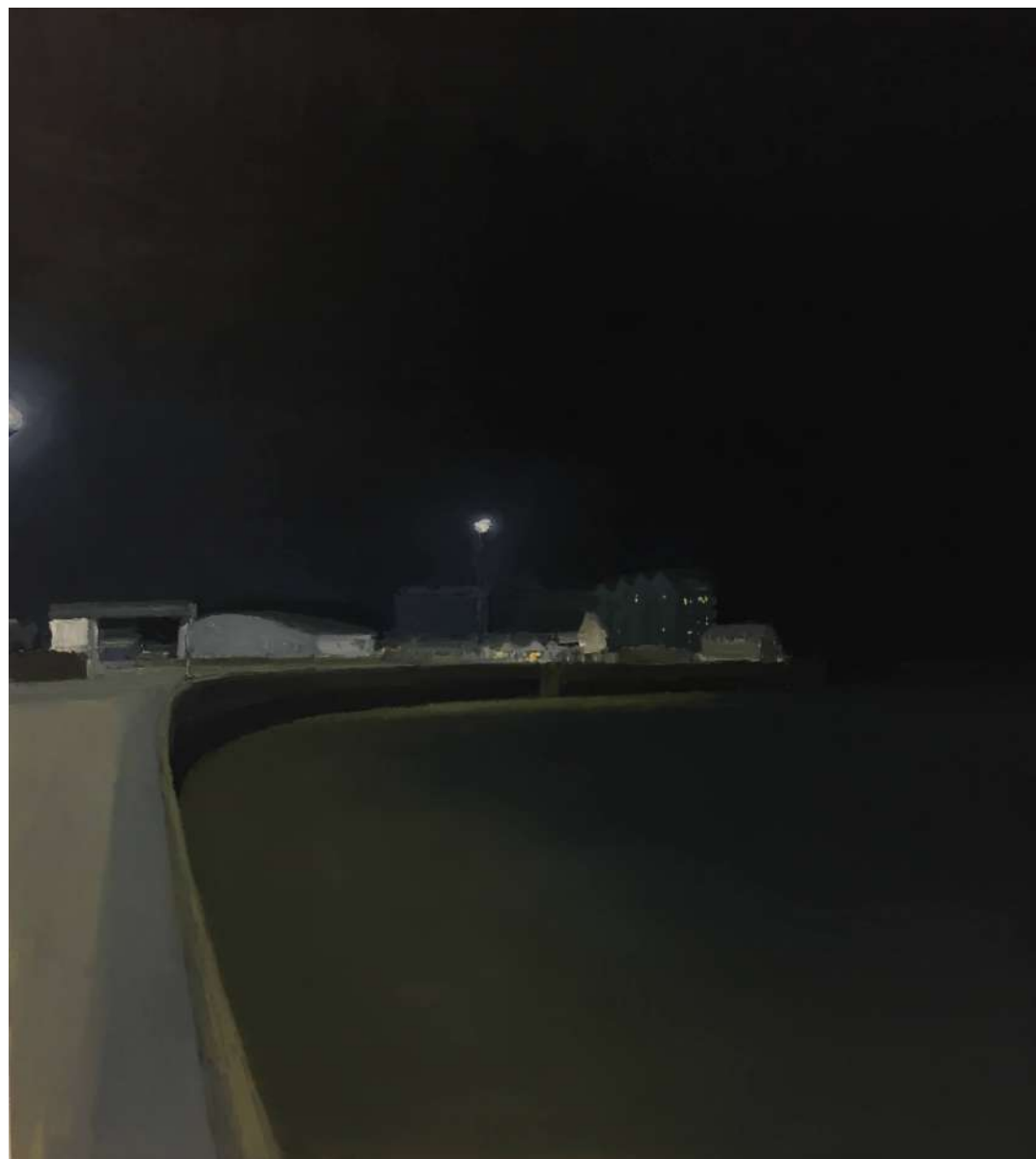


'Amble Harbour, November'
Acrylic on canvas
2021
90x120cm
£1,850



'Night Harbour'
Acrylic on canvas
2021
110x100cm

£1,900



'View Up The Coquet, Dusk'
Acrylic on canvas
2022
75x100cm

£1,250



'Night-time Harbour'
Acrylic on canvas
2022
30x60cm

£400



'Little Shore from the Pier'
Acrylic on canvas
2021
40x60cm

SOLD ●



'End of the Pier'
Acrylic on canvas
2022
75x100cm

SOLD ●



'Horizon Lights No.1'

Acrylic on canvas

2021

30x60cm

£400



'Horizon Lights No.2'

Acrylic on canvas

2021

30x60cm

£400



'Horizon Lights No.3'

Acrylic on canvas

2021

30x60cm

£400





'Patchy Cloud (At Dusk)'

Acrylic on canvas

2022

45x60cm

£550



'Moonlight Landscape (Morwick)'

Acrylic on canvas

2022

30x40cm

£275

'Amble Links (Twilight)'
Acrylic on canvas
2022
85x75cm
£1,150



'Amble Links (Dusk)'
Acrylic on canvas
2022
120x150cm

£2,950





'Winter Light On The Dunes
Near Hauxley'
Acrylic on canvas board
2022
20x25cm

SOLD ●



'The Beach (Low Hauxley)'
Acrylic on canvas
2022
30x30cm

£225

'Night House'
Acrylic on canvas
2022
25x30cm

£200





'Nocturne, Sunday Evening'

Acrylic on canvas

2021

30x40cm

SOLD ●



'Rooftops Amble'

Acrylic on canvas

2021

30x40cm

£275



'July Evening'
Acrylic on canvas
2022
40x40cm

£325



'Evening Rooftops Study'
Acrylic on canvas
2022
30x25cm

£200

'Riverside Park, Dusk'
Acrylic on canvas
2022
120x100cm
£1,950



'View Off The Castle Bank,
Warkworth'
Acrylic on canvas
2022
60x50cm

£600



'View Off The Castle Bank, Full Moon'
Acrylic on canvas
2022
100x75cm

£1,250





'River Through The Trees,
Warkworth'
Acrylic on canvas
2022
60x50cm

SOLD ●



'Castle Through The Trees,
Warkworth'
Acrylic on canvas
2022
50x50cm

£525

'Riverbank (Warkworth)'

Acrylic on canvas

2022

60x50cm

£600



'Jack Rock, Morwick'
Acrylic on canvas
2022
60x50cm

£600

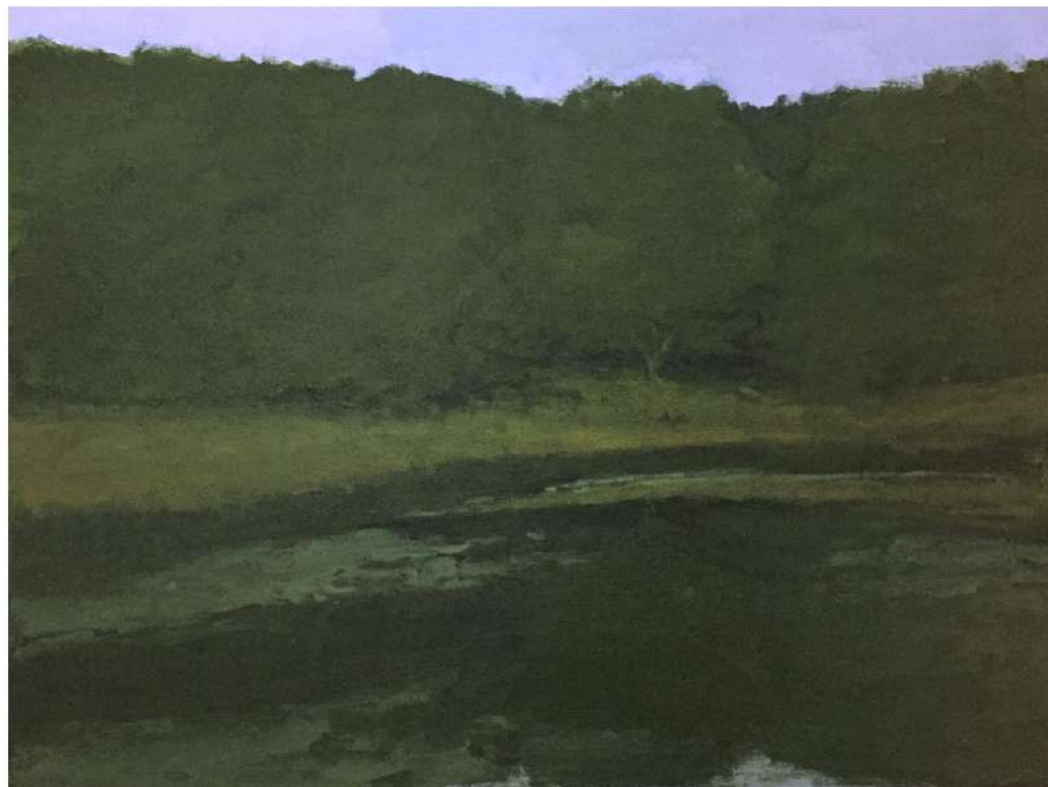


'Spring River, Morwick'
Acrylic on canvas
2022
60x75cm
£850



'Late Summer Pond'
Acrylic on cradled wooden
panel
2021
45x60cm

£550



'Summer Pond, Moonrise'

Acrylic on canvas

2022

60x50cm

£600



'Moonrise Over The Fields'
Acrylic on canvas
2022
70x80cm
£1,050



'Spring Evening, Gloster Hill'

Acrylic on canvas

2022

75x100cm

£1,250





'Sunset Study #1 (November)'

Acrylic on canvas board

2021

20x25cm

SOLD ●



'Bramble Bush'

Acrylic on board

2020

20x25cm

£150



'Trees By The Pond'
Acrylic on cradled wooden panel
2022
25x30cm

£200



'Half Moon'
Acrylic on cradled wooden panel
2022
25x30cm

SOLD ●



'Bare Trees By The Pond'

Acrylic on canvas

2022

40x50cm

£450



'Pond, Heavy Drizzle'

Acrylic on canvas

2022

40x50cm

£450



'Tall Birches'
Acrylic on canvas
2022
40x50cm

£450



'Rainy Evening'
Acrylic on canvas
2022
40x50cm

£450

'Little Rain'
Acrylic on canvas
2022
24x70cm

£375



'Winter Pond'
Acrylic on canvas
2022
75x100cm



£1,250

'Heavy Weather'
Acrylic on canvas
2022
80x100cm

£1,300



'9.30pm'
Acrylic on canvas
2022
100x120cm
£1,950



'Dank Evening'
Acrylic on canvas
2022
60x75cm

£850



Luke McTaggart

Email: lmctaggart7@hotmail.com

Tel: +44 07948 092188

Website: <https://lukemctaggart.wordpress.com/>

Instagram: @lukemctaggart_02

Twitter: @Luke_McTaggart

Facebook: LukeMcTaggartArt

Education

2019-2022 - Bachelors of Fine Art (First-class), Northumbria University, Newcastle

Solo Exhibitions

2021 - A Question Of Place, The Playhouse Gallery, Alnwick

2021 - Amble Now, The Old Storehouse, Amble

2022 - Horizons, Bailiffgate Museum and Gallery, Alnwick

Group Exhibitions

2021 - North-East Perspectives, Bowlees Visitor Centre, Barnard Castle

2022 - Portrait of Northumberland: The Northumberland Open, Woodhorn Museum

2022 - Alnmouth Arts Festival, Hindmarsh Hall, Alnmouth

2022 - Discordance, Northumbria University, Newcastle

Awards

2022 - Highly Commended Award for 'Northumbrian Dusk, Fields Beyond Amble', Portrait of Northumberland: The Northumberland Open, Woodhorn Museum

2022 - Alnmouth Arts Festival Poster Winner

Contact Details

For sales of work featured in this catalogue please contact the Bailiffgate Museum and Gallery directly using the contact details listed below.

Bailiffgate Museum and Gallery

Email: ask@bailiffgatemuseum.co.uk

Tel: +44 01665 605847

Website: <https://bailiffgatemuseum.co.uk/>

Address: 14 Bailiffgate, Alnwick, Northumberland NE66 1LX

Opening Times - 10am - 4pm Tuesday to Sunday